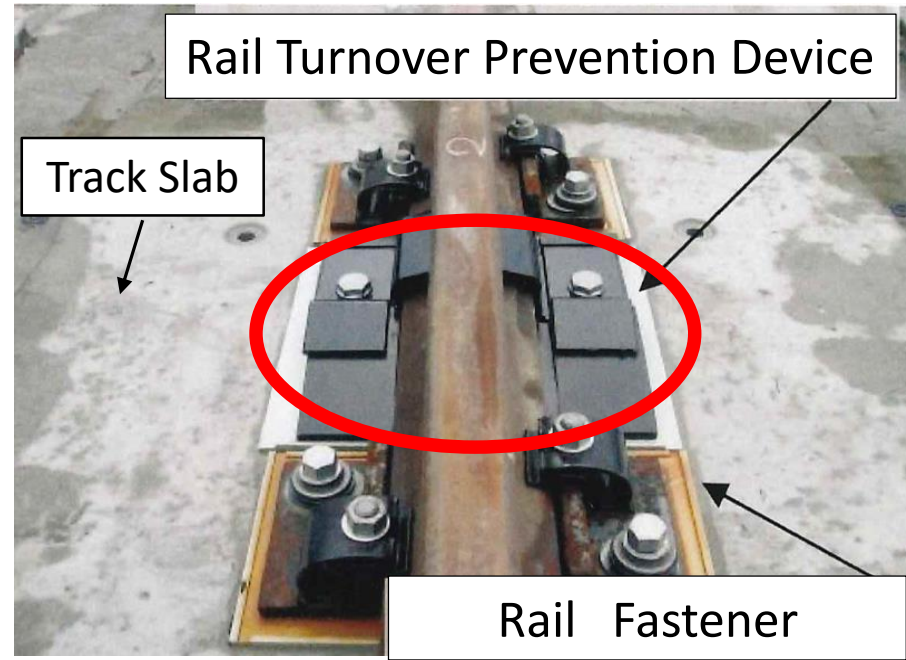
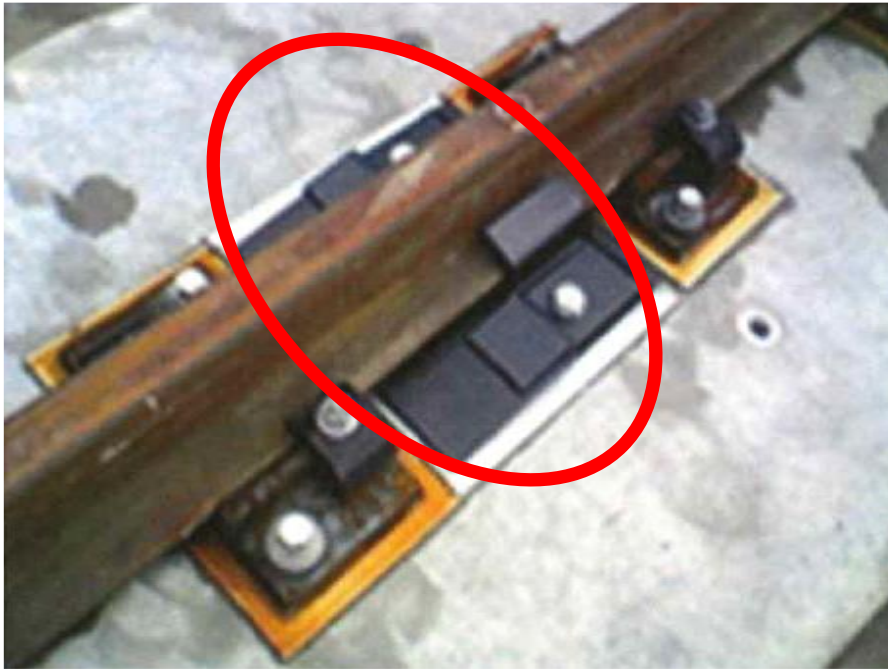
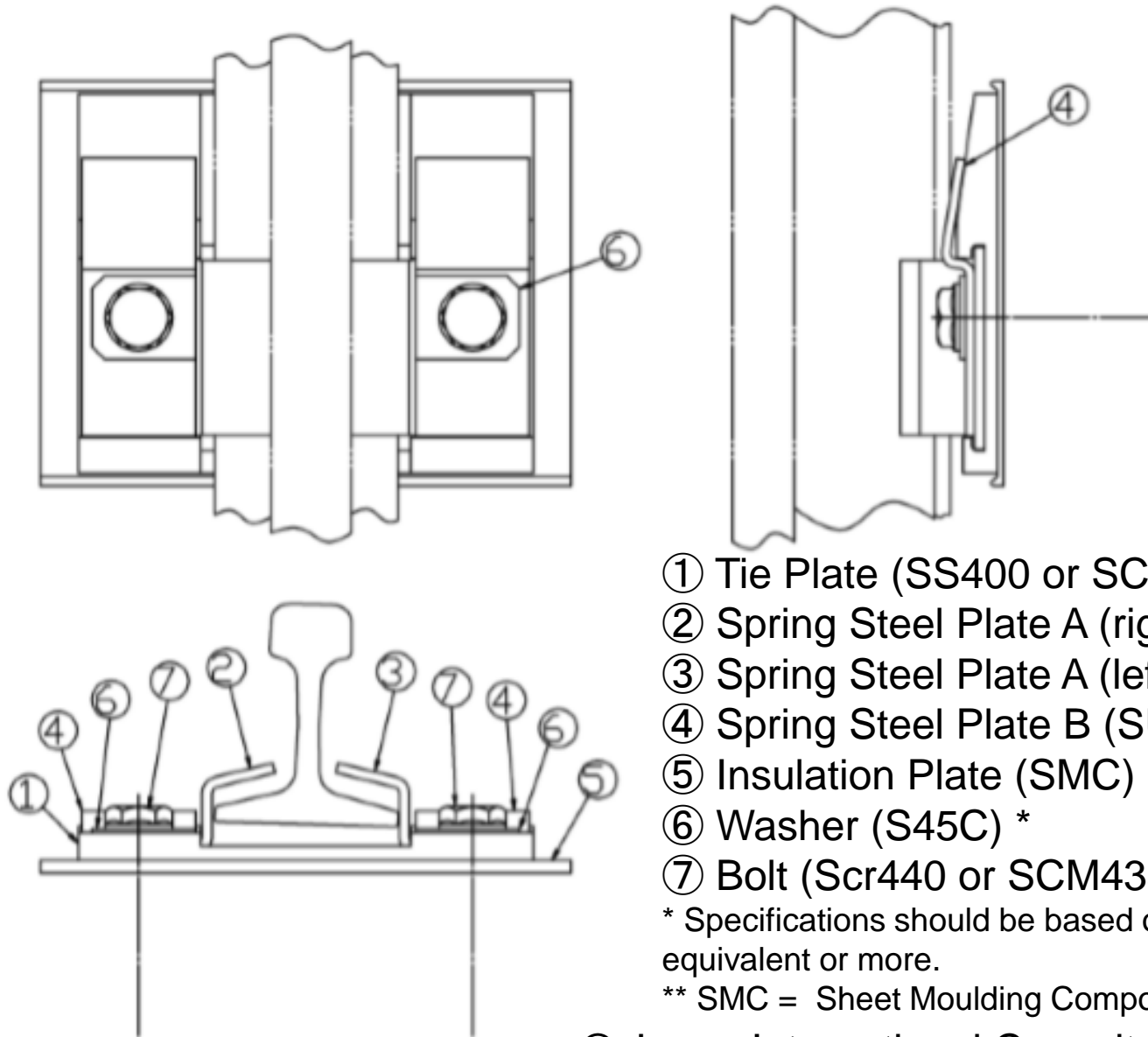


# Rail Turnover Prevention Device



Even if the derailed HSR train breaks the rail fasteners, the rail turnover prevention device can **prevent rail turnover** by resisting the impacted wheel loads and preserving the rail seating position.

# Abstract of Rail Turnover Prevention Device for Slab Track of MAHSR



[For reference]

# Derailment due to Earthquake



The great earthquake (Magnitude 6.8) occurred on 23/10/2004. HSR train running at 204kph derailed.